



Applications

Colors



Floor Tile



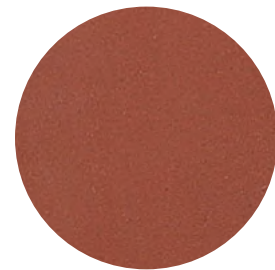
Exterior



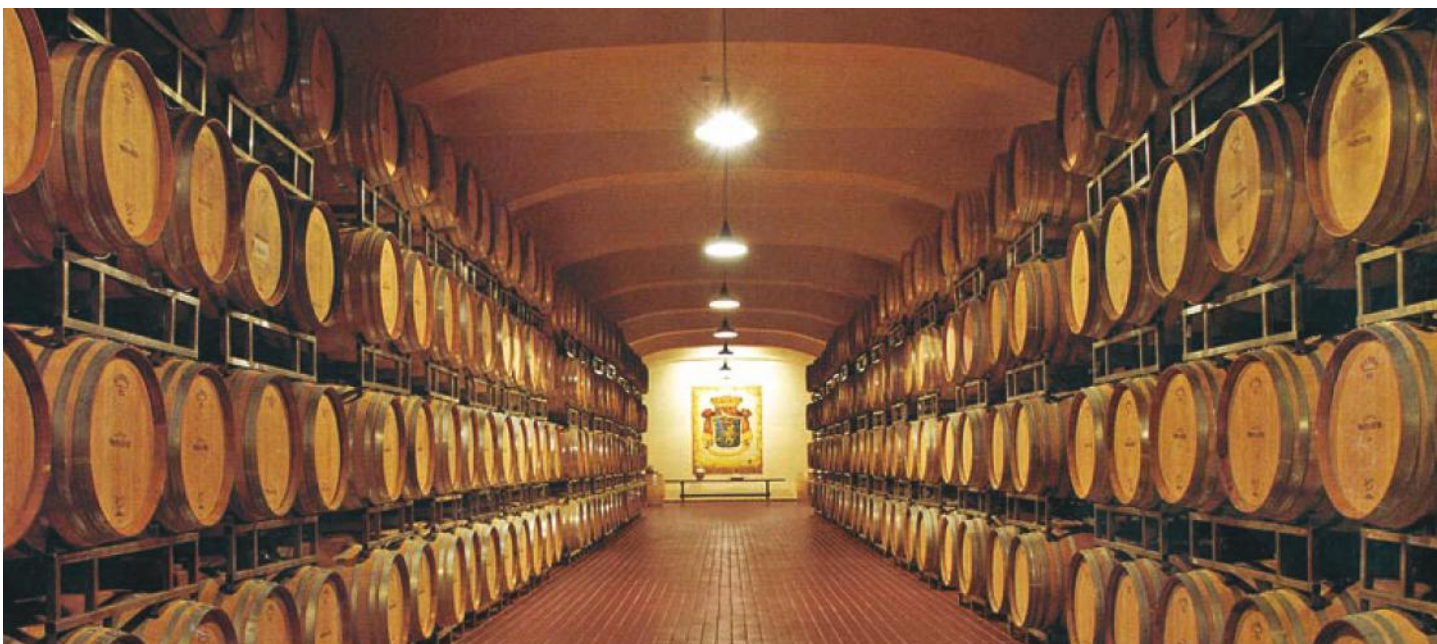
Wall Tile



Interior



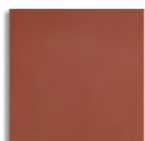
Red



Sizes



1" x 6" Bullnose



6" x 6" Field



6" x 6" Cove Base



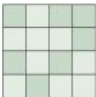
6" x 6" Bullnose



6" x 6" Double Bullnose



Technical Data

Variation	Mohs Hardness	Breaking Modules	Water Absorbition	Abrasion Resistance	Dynamic Coefficient of Friction	Resistance to Frost (ASTM)
 V2	≥ 6	> 29 N/mm ³	< 0.5%	≥ 345 N/mm ³	Complies	Frost Proof